



On behalf of all of us at Denbright Dental Labs, welcome! We're honored to work with you as a new preferred lab partner!!

At Denbright, we're committed to collaboration, communication, and delivering consistent, high-quality results that align with your clinical standards and operational goals.

We're also excited to connect with those of you participating in our new scanner program. We're confident it will be a valuable tool in streamlining workflows, enhancing efficiency, and strengthening our partnership even further.

Please know that I'm always here – along with the amazing teams at each of our labs – to support you in any way we can.

We look forward to working closely with your team and supporting your success every step of the way.

All my best,



Mary Barlow  
Director of Business Development, DSO  
(832) 610-4358  
mary@denbright.com

**16**

**Dental lab locations**

To support your dental practice's needs with precision and proximity.

**99%**

**On-time delivery**

Count on us for on-time delivery, and exceeding your expectations.

**>500**

**U.S.-based technicians**

Who are dedicated to crafting superior dental prosthetics with unmatched expertise.

**About Denbright Dental Labs**

Denbright Dental Labs is the fastest-growing dental laboratory platform in North America, bringing together seven first-in-class labs to deliver exceptional quality and full-service solutions to dentists nationwide.

With a commitment to precision, innovation, and reliability, Denbright empowers dental professionals with the highest standard of restorations and support, ensuring outstanding patient outcomes.



## Quick Lab Reference Guide

### Shipping and Turnaround Times

	Type of Lab	Shipping Provider	Shipping Fee	Turnaround Crown & Bridge	Turnaround Implant	Turnaround Removable	Location	Accepts Digital & Analog
<b>Absolute Dental Services</b>	Complex Cases, Implants, All on 4, Digital Dentures	UPS	Free Shipping	10-15 days	15 days	Varies	Durham, NC	x
<b>Burbank</b>	Full Service	UPS FED EX (on demand)	Free in L.A. \$12.95	5 Days	10-15 Days	7-10 Days	Burbank, CA	x
<b>D&amp;S Dental</b>	Full Service	UPS FED EX Spee-Dee US Mail	Ground Shipping Included	8-10 Days	12 Days	8-12 Days	Waukegan, WI	x
<b>Friendship</b>	Full Service	UPS FED EX	\$15+	10 days	15 days	10 days	Baltimore, MD	x
<b>Frontier</b>	Smile Design, Esthetics, Implants, Crown and Bridge	UPS	Free Shipping	10-12 days	10-12 days	N/A	El Dorado Hills, CA	x
<b>Jason J. Kim Dental Aesthetics</b>	Boutique Esthetic Lab	FED EX	Varies	6-7 days	12-15 days	N/A	Port Washington, NY	x
<b>Nu-Art</b>	Full Service	UPS	Free Shipping	8-10 days	10-15 days	7-10 days	Brookfield, WI	x

### Products and Services

	Crown & Bridge	Implants	Full-Arch Solutions	Removables	Cosmetic	Sleep	Guided Surgery
<b>Absolute Dental Services</b>	x	x	x	x	x		x
<b>Burbank</b>	x	x	x	x	x	x	x
<b>D&amp;S Dental</b>	x	x	x	x	x	x	x
<b>Friendship</b>	x	x	x	x	x		x
<b>Frontier</b>	x	x			x		x
<b>Jason J. Kim Dental Aesthetics</b>	x				x		x
<b>Nu-Art</b>	x	x	x	x	x		x



## Welcome to Denbright Dental Labs

A nationwide platform of elite dental laboratories united by digital innovation, clinical excellence, and personalized service. Together, we offer you access to the most trusted names in dental prosthetics, each with its own legacy and specialty, under one platform.

### Absolute Dental Services

[www.absolutedentalservices.com](http://www.absolutedentalservices.com)

With over 10,000 guided surgeries completed, Absolute is a national leader in digital implant solutions. Their NavaGation™ team specializes in full-arch workflows, advanced esthetics, and in-house guided surgery planning—making them a trusted partner in complex restorative dentistry. Founded: 1994



### Frontier Dental Laboratories

[www.frontierdental.com](http://www.frontierdental.com)

Operating in El Dorado Hills, CA and Vancouver, BC, Frontier is a leader in cosmetic and full-arch dentistry. Known for stunning veneers, esthetic crowns, and smile design, Frontier is the trusted partner of more than 500 leading cosmetic dentists. Founded: 1984



### Burbank Dental Lab

[www.burbankdental.com](http://www.burbankdental.com)

Burbank is a full-service digital lab nationally recognized for its precision, innovation, and restorative excellence. With in-house titanium milling, photogrammetry support, and a deep commitment to education, Burbank delivers consistent, esthetic-driven results for every case. Founded: 1979



### Jason J. Kim Dental Aesthetics

[www.jjkda.com](http://www.jjkda.com)

Headquartered in Port Washington, NY, Dental Lab Aesthetics, LLC is a full-service dental laboratory specializing in high-quality, cosmetic dentistry cases. DLA provides complex products and solutions to its customers across the U.S. with a strong focus on excellent service. Founded: 1990



### D&S Dental Laboratory

[www.dnsdental.com](http://www.dnsdental.com)

For over 50 years, D&S has served dentists across the US with consistency and quality. As a full-service lab, they offer crowns, bridges, dentures, implants, and ortho appliances—all supported by cutting-edge CAD/CAM and NADL-certified workflows. Founded: 1972



### NuArt Dental Laboratory

[www.nuartdental.com](http://www.nuartdental.com)

Based in Brookfield, WI, NuArt is built for precision. From digital dentures and implants to zirconia crowns and orthodontics, their team leverages best-in-class equipment and training to deliver outstanding fit and function with every case. Founded: 1977



### Friendship Dental Laboratories

[www.friendshipdentallab.com](http://www.friendshipdentallab.com)

Serving dentists across the US, Friendship delivers crown and bridge, removable, implant, and cosmetic cases with personal service and consistent results. Their in-office support team, CE training, and rapid turnaround make them a go-to lab for dependable partnerships. Founded: 1973



## Absolute Dental Services

### CROWN & BRIDGE

Single Unit Posterior Multilayer <i>with check mode</i>	\$90
Single Unite Anterior Multilayer <i>with check model</i>	\$112
Lithium Disilicate Posterior	\$119
Lithium Disilicate Anterior	\$139
Lithium Disilicate Veneer	\$99
Lithium Disilicate Inlay/Onlay	\$139
Full Gold Flate Rate Y+	\$159
<b>Additional Fees</b>	
Zirconia Abutment	\$77
Anterior	\$30
Layered Zirconia	\$64

### IMPLANTS

Implant Crown Ti-Base Non-proprietary*	\$295
Non-proprietary Custom Abutment*	\$395
Proprietary Custom Abutment*	\$550

*\*all inclusive*

### GUIDED SURGERY

Number of Sites			
Single	\$321	Two	\$394
Three	\$394	Four	\$469
Five	\$544	Six	\$629
Seven	\$714	Eight	\$789
Monolithic Zirconia Hybrid	\$5,250		
Synergy to Final Package	\$5,950		
Synergy Full Arch Surgery and Conversion	\$3,330		

### DIGITAL DENTURES

IMMEDIATE DENTURE PREMIUM CARDED TEETH	\$299
Digital Impression or PVS Impression	
STANDARD DENTURE: STANDARD FESTOONING	\$325
Premium Carded teeth or printed tooth structure	
PREMIUM DENTURE: CUSTOM FESTOONING	\$425
High-end premium denture teeth or printed monolithic tooth structure	
COPY DENTURE	
Ordered within 7 days of final delivery. Exact copy.	
Carded teeth or printed tooth structure.	\$225
Ordered within 2 years of final delivery.	
No changes can be made to original file or Rx.	\$314
DIGITAL DENTURE RELINE	\$125

### HYBRIDS

#### PMMA PROVISIONAL

#### TRANSITIONAL OPTIONS

Esthetic Wearable PMMA	\$578
Ti Bases (additional fees per site - \$50)	

#### PHASE 2

Phase 2	\$473
<i>When not included in a surgical package</i>	
Phase 2 Scan Flag	\$32

#### SIGNATURE ZIRCONIA SOLUTIONS

Digital All-On-X	\$3,950
OptiSplint, Powerball Rosen	
Premium Monolithic Zirconia	\$5,250
<i>Includes models, verification, and two prototypes</i>	
Additional Prototypes	\$158

#### LOCATOR FIXED HYBRID

Printed Polymer Base with Internal Cobalt Support & Printed Tooth Structure	\$999
<i>Absolute Recommended on LF</i>	
High Strength, High Translucent, Multi-Layer Zirconia LF Hybrid	\$3,415
<i>Includes PMMA hybrid prototype</i>	

#### ATLANTIS® BRIDGEBASE

Titanium Supported Premium Zirconia	\$5,250
-------------------------------------	---------

#### THE CONUS CONCEPT

Conus Premium (Digital ONLY)	\$4,150
------------------------------	---------

#### REMOVABLE OPTIONS

Locator Clip Bar	\$4,305
Hader/Dolder Clip Bar	\$4,305
Gold Clips	\$550
Lucitone Printed Locator Denture	\$1,040
<i>Includes housing. Abutments not included.</i>	

#### ACRYLIC OPTIONS

CoCr Bar + Acrylic & Monoblock Teeth	\$5,000
CoCr Bar + Acrylic with Premium Denture Teeth	\$5,250

#### REMOTE DESIGN REVIEW

Per 1 Hour Session	\$80
--------------------	------

## Absolute Dental Services

### REMOVABLES

#### ANALOG PROSTHETICS

Ivoclar Full Denture (Try-in with teeth & process)	\$395
Bite Rims	\$44
Custom Tray	\$44
Essix Retainer	\$101 and up
Processing Locator in Denture	\$78 per site
Processing of Dr. Supplied ERA Components/Locator	\$25 per site

#### COMPLETE DENTURES

Wax Try-In Economy Teeth	\$158
Wax Try-In Standard Teeth	\$186
Wax Try-In Premium Teeth	\$214
Wax Try-In Reset	\$49
Process Denture - IvoBase	\$134
Ivotion Milled Denture	\$349
Custom Tray	\$44

#### PARTIAL DENTURES

Flipper 1 Tooth	\$102
Each Additional Tooth	\$20
Acrylic Partial	\$136
Unilateral Nesbit Dura ex Partial	\$153
DuraFlex Partial	\$246
CoCr Printed Metal Framework	\$182
Setup on Framework	\$139
Partial Setup	\$139
Wire Clasp	\$31
Flexible Clasp	\$91
Partial Wax Rim	\$44

#### BRUXISM

Night Guard Flat Plate	\$150
H/S Night Guard (Comfort Splint)	\$171
Sports Guard	\$100
Bleaching Tray	\$76

### NAVIGATION GUIDES

#### THE WORKS - Fully Guided or Pilot Guide

1 Implant	\$321
2-3 Implants	\$394
4 Implants	\$469
<i>Additional Implant Sites Are \$75 Each</i>	

#### You Plan, We Print

Single Unit Guide	\$150
Additional Sleeves	\$45
Click Fee	\$45
Printed Model	\$52
We Plan and Design, You Print	
Guide (up to 3 units)	\$160
Guide (more than 3 units)	\$230

#### Fixation Pricing

Fixation Sleeve	\$27
Pin / Screw	\$45
Drill	\$115
Driver Handle	\$104
Driver Shaft	\$55
Contra Angle	\$55

#### Mucosa and Bone Borne Guides

Up to 6 Implants	\$734
<i>Additional Implant Sites are \$75 each</i>	

#### Temporary Options

Guide and Protemp Requires Charside Pickup	
Single Unit Guide and Protemp	\$478
<i>Additional Implant Sites are \$75 each</i>	
<i>Additional Temporary Sites \$62 Each</i>	

#### Screw-Retained Temporary

Each Implant site	\$345
-------------------	-------

### HOW TO SEND CASES



Search Absolute Durham #5525 through "add preferred lab" or connect through tech support (800-577-8767).



**SHIPPING** - Free

#### TURNAROUND TIMES

**Crown & Bridge** - 10-15 days in lab  
**Implants** - 15 days in lab  
**Removables** - Varies

## Burbank

### CROWN & BRIDGE

Bridgese.max Crown / Bridge / Veneer	\$155
e.max Layered Crown / Bridge / Veneer <i>(Smiles By Design)</i>	\$250
e.max Layered Crown / Bridge / Veneer	\$165
e.max Inlay / Onlay	\$125
Full Contour Zirconia Crown / Bridge	\$75
Full Contour Zirconia Anterior Crown / Bridge <i>Multi-color or high-translucent</i>	\$75
Layered Porcelain to Zirconia Crown / Bridge <i>(Smiles By Design)</i>	\$250
Layered Porcelain to Zirconia Crown / Bridge	\$165
Milled or Printed Temporary Crown	\$35

### IMPLANTS

ProductsTitanium Custom Abutment and Zirconia Crown Package	\$295
Zirconia Custom Abutment and Zirconia Crown Package	\$389
Zirconia Hybrid Denture - 4 Implant Site	\$3,995
Custom Titanium Abutment (without package)	\$171
Custom Zirconia Abutment (without package)	\$214
Single Site Fully Guided Surgical Appliance* <i>(Including Consultation) *Each Additional Site \$50</i>	\$270

#### ADDITIONAL SERVICES

Printed Model Charge	\$15
----------------------	------

### HOW TO SEND CASES



Search "Burbank Dental Lab" or by Company ID (3722) through "add preferred lab" or connect through tech support (800-577-8767).



\$12.95

#### TURNAROUND TIMES

**Crown & Bridge** - 5 days-single modeless cases

**Implants** - 7-12 days

**Removables** - 7-10 days

## D&S Dental Laboratory

### CROWN & BRIDGE

PORCELAIN FUSED TO ZIRCONIA	\$170
ZR FROM IMPRESSION	\$89
ZR FROM SCAN	\$79
ZR+ FROM IMPRESSION	\$150
ZR+ FROM SCAN	\$140
FULL CAST NOBLE	\$115 +ALLOY
FULL CAST BASE	\$115
PFM NOBLE	\$140+ALLOY
PFM BASE	\$140

### IMPLANTS

NON-OEM TI CUSTOM ABUTMENT*	\$189
OEM TI CUSTOM ABUTMENT*	\$295
OEM ZR CUSTOM ABUTMENT	\$394

\*Abutment only. Available for Astra, Straumann, Nobel, Zimmer, BioHorizon, Hiossen, Implant Direct, and Megagen

### REMOVABLES

<b>DENTURES</b>	
PREMIUM DIGITAL DENTURE	\$299
ECONOMY DIGITAL DENTURE	\$259
RELINE	\$126
DIGITAL RELINE	\$209
SOFT RELINE	\$200
<b>PARTIAL DENTURES</b>	
CHROME PARTIAL W/2 CLASPS	\$300
ULTAIRE PARTIAL	\$500
<b>FLEXIBLE PARTIALS</b>	
BRIGHTFLEX PARTIAL*	\$249
FLEXIBLE PARTIAL	\$349
CLEAR CLASPS	\$88
FLEXIBLE REPAIR	\$109
FLEXIBLE ADD TOOTH	\$129

\*Up to 5 teeth

### HOW TO SEND CASES



Search "D&S" or by Company ID (11312) through "add preferred lab" or connect through tech support (800-577-8767).



**SHIPPING** - Ground Included

#### TURNAROUND TIMES

**Crown & Bridge** - 10 days in lab

**Implants** - 10-12 days in lab

**Removables** - 10 days in lab

## Friendship Dental Laboratories

### CROWN & BRIDGE

#### ZIRCONIA

Solid Zirconia	\$79
Esthetic Solid Zirconia	\$99
Layered Zirconia	\$105
Zirconia Inlay/Onlay	\$75
Zirconia Post & Core	\$60
Zirconia Maryland Bridge	\$225

#### ALL-CERAMIC

E.max® CAD Full-Contour	\$99
E.max® Inlay/Onlay	\$99
Veneers	\$99

#### FULL CAST METAL

Non-Precious	\$60
White Semi-Precious	\$60*
Yellow Semi-Precious	\$60*
White High Noble	\$60*
Yellow High Noble	\$60*
NP Post & Core	\$60*
SP Post & Core	\$60*
HN Post & Core	\$60*

\*Alloy - Charged per pennyweight used

#### PORCELAIN-TO-METAL

Non-Precious	\$65
Noble/Semi-Precious	\$65*
High Noble White	\$65*
High Noble Yellow	\$65*
Maryland Bridge	\$189
Additional Pontic	\$65
Additional Wing	\$50

\*Alloy - Charged per pennyweight used

### REMOVABLES

#### FULL DENTURES

Standard Denture	\$199
Premium Denture	\$279

#### FLEXIBLE PARTIALS

Partial	\$185
---------	-------

#### ACRYLIC-TO-METAL PARTIALS

Cast Partial	\$195
Vitalium	\$250

#### BITE SPLINTS & RETAINERS

H/S Bite Splint	\$95
Hard Bite Splint	\$80
Soft Nightguard	\$70
Bleaching Tray	\$40
Clear Retainer	\$50

#### TEMPORARIES

Temporary	\$45
Temporary Cement over Implant	\$65
Screw-Retained over Implant	\$105
Duplicate Model	\$12

#### IMPLANT REMOVABLE

Screw-Retained Hybrid Denture	\$2,999
Screw-Retained BruxZir Hybrid Bridge	\$2,999
Bone Reduction Guide	\$200

### HOW TO SEND CASES



“Search “Friendship Dental Lab” or by Company ID (2034) through “add preferred lab” or connect through tech support (800-577-8767).



**Shipping: \$15+**  
**TURNAROUND TIMES**  
**Crown & Bridge - 5 - 10 days**  
**Implants - 15 days**  
**Removables - Varies**

Questions? Call us at (410) 780-7700 or email [info@friendshipdentallab.com](mailto:info@friendshipdentallab.com)

## Frontier Dental Laboratories

### CROWN & BRIDGE

#### METAL-FREE

Brilliance Z Full Contour Zirconia Posterior <i>(Digital Scans only - must specify "Modeless" on digital RX)</i>	\$69
Brilliance Z Full Contour Zirconia Posterior <i>(With models)</i>	\$99
Porcelain Fused to Zirconia Posterior	\$149
Emax Pressed Posterior	\$109

#### METAL

Posterior PFM non-precious (alloy included)	\$75
Posterior PFM Noble (plus alloy at MP)	\$75
Full Cast Crown (plus alloy at MP)	\$75

*Non-precious restorations include 1DWT of alloy. Additional alloy will be charged separately.*

#### ANTERIOR ALL-CERAMIC

Premium All Ceramic Smile Design <i>(Includes 8 &amp; 9, created by our Master Ceramists - layered Emax, Porcelain Fused to Zirconia)</i>	\$275
Deluxe All Ceramic Smile Design <i>(Includes 8 &amp; 9, layered Emax, Porcelain Fused to Zirconia, Brilliance Z Full Contour Zirconia)</i>	\$209
Standard Solution All Ceramic Anterior <i>(Does NOT include 8 &amp; 9)(Case must be 3 units or less) (Stain + glazed, Emax and Brilliance Z Full Contour Zirconia)</i>	\$109
Gingival Replacement <sup>1</sup> <i>(\$12 per tooth, up to 6 units per arch)</i>	\$12

#### EXTRAS

Porcelain Butt Margin	\$15
Rest Seat	\$20
Rush Fee - 5 days <i>Please specify Premium, Deluxe or Standard Solution in the instructions section on your RX form to clarify the restoration you are requesting.</i>	\$50

#### DIAGNOSTIC SERVICES

Duplicate Model <sup>2</sup>	\$25
Temporary Matrix	\$29
Prep Matrix	\$29
Diagnostic Wax Up (per unit)	\$30
Case Mounting <sup>3</sup>	\$48
Facebow Mounting	\$52

### HOW TO SEND CASES



Search "Frontier Dental Lab" or by Company ID (4550) through "add preferred lab" or connect through tech support (800-577-8767).



**FREE SHIPPING**

#### TURNAROUND TIMES

**Crown & Bridge** - 10 - 12 days  
**Implants** - 10 - 12 days

### IMPLANTS

Prices include New Final Screw & Implant Jig. Prices excludes Restoration Fee (See Fee Schedule)

#### Abutment Only

	<b>Post. / Ant.</b>
FDL Smart Abutment (Non-OEM)	\$200
BioMet / Zimmer (Encode Empowered Lab)	\$406
Atlantis	\$406
Straumann	\$327
Nobel BioCare	\$327
Vulcan	\$327
Hiossen	\$327
NeoDent	\$327

Pricing example of Complete Implant Case: Custom Abutment (Above) + Type of Restoration = Total

NOTE: \*Implant Analog is \$61 if there is not one provided with the case. For Zirconia and Emax abutments, please contact your Smile Designer for the Fee.

1. Gingival Replacement: A Gingival Replacement model is for Anterior Restorations. It is fabricated with pink simulation mask to ensure proper emergence profile and the closure of interproximal embrasures. It is per unit charge up to 6 units.

2. Duplicate Model: For Diagnostic Wax Ups, we duplicate the models to retain a Baseline set. This is optional. If impressions are sent, there will be a fee to develop the models.

3. Case Mounting: When it is necessary for Case Fabrication, we mount cases on a Semi Adjustable Articulator. Examples include: Smile Design / Complex Occlusion/ Cases with no posterior stops / Dr. Preferences /All Diagnostic Wax Ups.

4. NOTE: Special handling charges may apply to rush cases and special orders.

### ALL-ON-X

All-on-X: Full Contour Zirconia <i>Price includes Ti-bases and final</i>	\$3500 <i>Per Arch</i>
All-on-X: PMMA Prototype <i>Price Includes design and up to 2 PMMA prototypes (If more than 2 are needed, an additional \$500 each) Additional charge if Ti-bases are requested.</i>	\$1000 <i>Per Arch</i>
Immediate Denture	\$500

### NIGHTGUARDS

Hard/Soft	\$100
Kois Nightguard	\$210
Kois Deprogrammer	\$150

## Nu-Art Dental

### CROWN & BRIDGE

#### METAL

PFM ANTERIOR	\$153 +Alloy
PFM POSTERIOR	\$148 +Alloy
PFM METAL OCCLUSAL	\$158 +Alloy
FULL CAST CROWN/ ONLAY / INLAY	\$121 +Alloy
POST & CORE YOUR PATTERN	\$52 +Alloy
POST & CORE OUR WAX UP	\$86 +Alloy

#### METAL-FREE

NU-ART ALL ZIRCONIA MONOLITHIC CROWN	\$126
Model-less	\$106
PREMIUM FC ANTERIOR (MONOLITHIC)	\$150
PREMIUM FC POSTERIOR (MONOLITHIC)	\$145
Model-less	\$121
PREMIUM LAYERED ANTERIOR	\$231
PREMIUM LAYERED POSTERIOR	\$223
IPS E.MAX ANTERIOR (MONOLITHIC)	\$170
IPS E.MAX POSTERIOR (MONOLITHIC)	\$165
IPS E.MAX ANTERIOR (LAYERED)	\$231
IPS E.MAX POSTERIOR (LAYERED)	\$221
FELDSPATHIC VENEER	\$284

### IMPLANTS

CEMENTABLE IMPLANT CROWN (PFM)	\$248 +Alloy
SCREW-RETAINED CROWN (PFM)	\$257 +Alloy
NU-ART PREMIUM FC MONOLITHIC CROWN	\$161
SCREW-RETAINED NU-ART PREMIUM	\$271
FC MONOLITHIC CROWN	
NU-ART PREMIUM LAYERED IMPLANT CROWN	\$266
SCREW-RETAINED NU-ART PREMIUM	\$338
FC LAYERED CROWN	
IMPLANT FULL CAST CROWN	\$193 +Alloy
IPS E.MAX LAYERED IMPLANT CROWN	\$252
PROCESS IMPLANT OVERDENTURE	\$223
IMPLANT PROCESS	\$437
IMMEDIATE LOAD PROVISIONAL	\$997

### FULL-ARCH

Zirconia Hybrid Estimate, Includes Baseplate, Set-Up, Custom Tray, Models, Parts & Replicas	\$5,670
Zirconia Hybrid, Includes Hybrid & Parts Only	\$3,591
Locator Case With 2 Locators Estimate	\$1,323
Conventional Hybrid Estimate with Bar (w/o parts)	\$3,358
Conventional Hybrid Estimate with Bar & Parts, Including Replicas, Copings & Abutments	\$4,725

#### CONUS

Conus Custom Framework	\$315
Conus Process	\$218
Conus Abutments	\$239/ea
Conus Caps	\$158/ea
Conus Whole Process Estimate	\$2,646

#### I-METRIC

I-Metric Scan, Sleeves, & Temporary	\$810
<i>Delivered Next Day</i>	
I-Metric Scan, Design & Send File For You To Print	\$450
<i>Delivered in 2 Days</i>	

#### TRADITIONAL CHAIRSIDE CONVERSION

Chairside Conversion Utilizing An Existing Denture	\$945
Chairside Conversion With A New Lab Fabricated Denture	\$1,323

### SURGICAL GUIDES

Basic Surgical Guide	\$127
Surgical Guide From Your Design	\$66
True Emergence Fully Guided Surgical Guide	\$330
Synergy Full Arch Package, Includes Planning, Review, All Guides, PMMA, Immediate Denture, Final Zirconia Hybrid Prosthetic Restoration	\$6,095
Synergy Basic, Includes Planning, Review, Non-Foundation Guides Only	\$1,607
PEEK Foundation Guide	\$165
SLM Metal Foundation Guide	\$236
Abutment Aligner	\$141

Many of these fees can vary with different components/parts, traveling distances, and with variations within the process. This fee schedule is to be used as an estimated guide when considering lab cost during the treatment planning process.

Questions? Call us at (888) 895-2927 or email [kj@nuartdental.com](mailto:kj@nuartdental.com)

## Nu-Art Dental

### DENTURES

#### SETUPS

DENTURE SET-UP	\$84 + Teeth
IMMEDIATE SET-UP	\$88 + Teeth

#### PROCESSING

All finishes include post dam, mill in, festoon and stipple unless otherwise prescribed

DENTURE HOUSE ACRYLIC	\$101
DENTURE LUCITONE 199	\$112
PROCESS IVOCAP	\$139
EMBARRASSMENT DENTURE	\$180
TREATMENT PARTIAL	\$94 + Teeth
TREATMENT PARTIAL WITH CLASPS	\$139 + Teeth
RELINE DENTURE	\$102
RELINE IVOCAP	\$143
REBASE	\$127
REBASE IVOCAP	\$148

#### DIGITAL

DIGITAL DENTURE+ TRY IN	\$331
TRY-IN DENTURE	\$67
IMMEDIATE DIGITAL DENTURE	\$252
BASE PLATE AND BITE RIM	\$48
PUT IN NAME	\$19
30 PRINT MODELS	\$20
20 DIGITAL DENTURE DESIGN AND SEND STL	\$104
DIGITAL PARTIAL DESIGN AND SEND STL	\$104

### PARTIALS

2 CLASP	\$196	PARTIAL RIM	\$40
3 CLASP	\$219	PARTIAL	
4 CLASP	\$240	SET-UP	\$75 + Teeth
5 CLASP	\$270	PARTIAL PROCESS	\$101
6 CLASP	\$291		

#### FLEXIBLE PARTIALS

TCS SET-UP	\$75 + Teeth
TCS PROCESS	\$318
TCS REPAIR	\$157 + Teeth
TCS RELINE	\$203

### NIGHTGUARDS

NIGHT GUARD IVOCAP	\$140
NIGHT GUARD IVOCAP WITH CLASPS	\$151
NIGHT GUARD SOFT	\$64
NIGHT GUARD HARD/ SOFT	\$178
THERMO-PLASTIC SPLINT	\$140
KEYSPLINT HARD	\$140
KEYSPLINT SOFT	\$140
SPORTS GUARD   ATHLETIC GUARD	\$77

#### ADDITIONAL ITEMS

ADD CLASP	\$76
BLEACHING TRAY	\$63
ESSIX APPLIANCE	\$128
DIAGNOSTIC HAND WAX-UP	\$27
ADDITIVE HAND WAX-UP	\$23
DIGITAL SCAN OF IMPLANT MODEL	\$29

### HOW TO SEND CASES



Search "NuArt Dental Lab" or by Company ID (354) through "add preferred lab" or connect through tech support (800-577-8767).



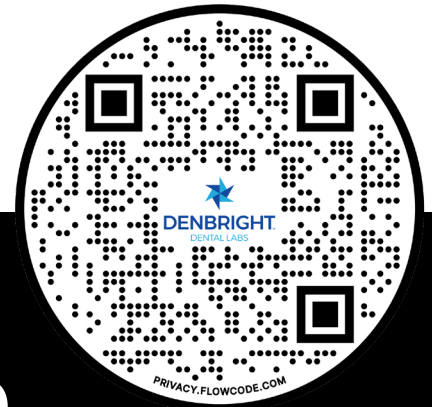
#### FREE SHIPPING

#### TURNAROUND TIMES

Crown & Bridge - 8 - 10 days

Implants - 10 - 15 days

Removables - 7 - 10 days



Introducing BrightFLEX 3D

# The Future of Flexible Partials Starts Here

Stronger. Faster. Fully Digital.

BrightFLEX 3D is a breakthrough in digital removable prosthetics. This 3D-printed flexible partial is stronger, more precise, and more efficient than traditional hand-processed options.

Built for digital workflows. Engineered for real-world durability.



Only \$249\*

## Why Choose Denbright's BrightFLEX 3D Flexible Partial

### 5-Day Digital Turnaround

Digitally designed, 3D-printed, and ready to deliver in just 5 days.

### Digitally Archived for Life

No more lost impressions—cases can be reprinted or modified from stored data.

### Exceptional Fit & Comfort

3D printing ensures higher precision and better adaptation than manual methods.

### Clinically Proven Strength

Outperforms leading hand-processed materials in flexural testing.

\*up to five teeth.

“BrightFLEX 3D is one of the most innovative materials to hit the dental prosthetics market in years. It's ground-breaking not just because it's 3D-printed—but because it delivers the strength, flexibility, and precision we've never seen in a removable partial. This changes what's possible for both labs and clinicians.”

— Jack Marrano, Absolute Dental Services



Scan the QR code or learn more at [denbright.com/brightflex-3d](https://denbright.com/brightflex-3d)

# EZ Load™ Makes Implant Conversions... EZ.

No denture conversion, adjusting, or technical assistance required!

This fully digital, prosthetically driven solution eliminates the traditional chairside chaos. With Smart Implant Mapping (S.I.M.) technology, you can scan directly after suturing – no photogrammetry required.

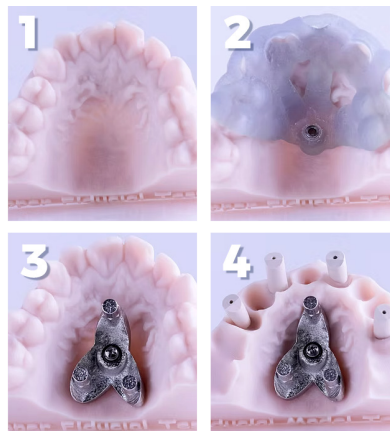
- Compatible with guided or freehand placement
- Precision fit of the final restoration
- Digital design for a fully replaceable restoration – no repairs needed



## The New Standard in Full-Arch Conversions—Fast. Precise. Fully Digital.

We've designed the Synergy EZ-Load™ to be fast and precise.

1. Pre-op
2. Seat fixation drill guide and drill pilot for fixation
3. Append the S.I.M. 2 device and scan the pre-op with the S.I.M. device
4. After implant placement and seating of the MUAs, scan the appropriate scan bodies with the S.I.M. device



### What is Smart Mapping Technology?

Smart Implant Mapping (S.I.M.) technology allows the surgeon to capture the post-surgical implant data using a standard intraoral scanner instead of a photogrammetry-based system.



# The Denbright Scanner Program

**One Platform. One Seamless Digital Workflow.**

Bring the future of dentistry into your offices, with no upfront cost. Denbright partners with Align Technology to deliver the industry-leading iTero scanner, powering both restorative and Invisalign workflows.

**This isn't just a scanner.**

It's the connection point between two of the most trusted names in dentistry – Denbright and Align.



## Why DSOs Choose the Denbright Scanner Program

### No CapEx Commitment

Deploy iTero scanners system-wide with zero capital investment, just meet simple monthly lab volume across your group.

### Enterprise-Ready Workflow Integration

Submit Denbright restorative and Invisalign® cases through a single digital platform, maximizing efficiency, compliance, and consistency.

### Turnkey Support from Day One

From installation to clinical adoption and training, Denbright and Align provide end-to-end onboarding and continuing education.

### Scale-Optimized for Growth

Whether you're onboarding 1 office or 100, our flexible structure supports DSOs at every stage of their digital journey.

*“The iTero technology suite is unmatched in dentistry, and their commitment to excellence is a perfect fit for Denbright and our platform of premium dental laboratories.”*

*– Greg Minzenmayer  
Chief Commercial Officer, Denbright*

### Let's Build Your Digital Rollout Strategy



Contact me:  
Mary Barlow  
mary@denbright.com  
1-832-610-4358

